

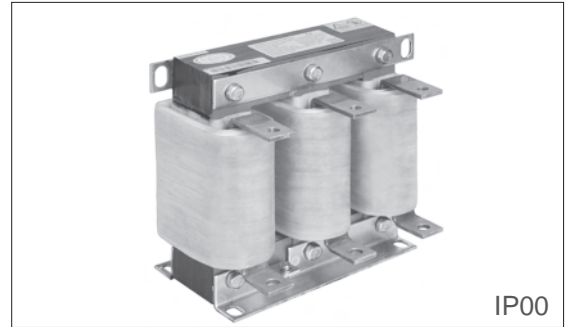
# 输入/输出交流电抗器

## Input AC/Output AC Reactor

### 产品简述 (Product Profile)

**输入电抗器**：是限流设备，用于驱动器的输入侧，保护交流驱动器不受瞬态超压的影响。有降低浪涌和峰值电流，提高真实功率因数，抑制电网谐波，改善输入电流波形的作用。

Input AC Reactor is applied at the AC drive input side to suppress inrush voltage, designed to reduce inrush & peak current, improve the real power factor, restrain the grid harmonics and improve the input current waveform.



**输出电抗器**：用于平滑滤波，降低瞬变电压 $dv/dt$ ，延长电机寿命。可以降低电机噪音，减低涡流损耗。降低输出高次谐波造成的漏电流。保护变频器内部的功率开关器件。

Output AC Reactor is applied to smoothing the circuit and filter harmonics in order to reduce the transient voltage  $dt/dv$  and extend the service life of the electric motors, which reduces the motor noise, eddy loss and leakage current resulting from the output of high harmonics and protects the power switch within the inverters.

### 产品特点 (Product Features)

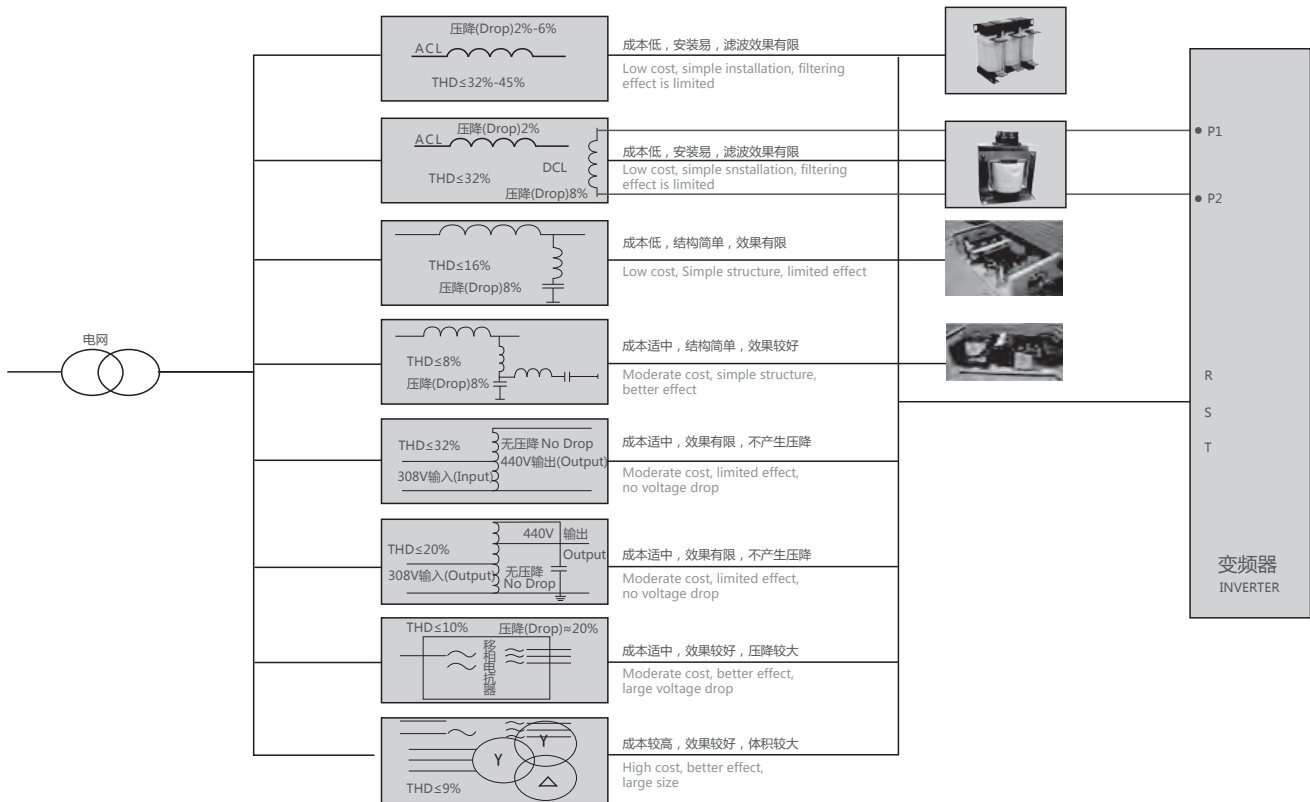
**交流输入电抗器**：采用了高性能的箔式绕组结构，具有直流电阻小，抗短路能力强，短时间过载能力强；采用高性能的F级以上的复合绝缘材料，使产品在严酷的工作条件下依然可以保持可靠的性能；电抗器设计磁通密度低，线性度好，过载能力强，配合真空压力浸渍工艺电抗器噪音小；铁芯采用优质低损耗冷轧取向硅钢片，电抗器损耗小，效率高，温升低。

Due to the excellent foil winding structure, Input AC Reactor is characterized by small DC resistance, strong ability to withstand short circuit and strong short-time overload capability. F Class insulation materials equip the products with reliable performance even in harsh operating conditions; designed with low magnetic flux density, the reactor is of high linearity and powerful overload capacity. Moreover, combined with VPI process, the reactor noise is low; With the core made of grain-oriented cold rolled silicon steel sheets, the reactor boasts high efficiency, low core loss and low temperature rise.

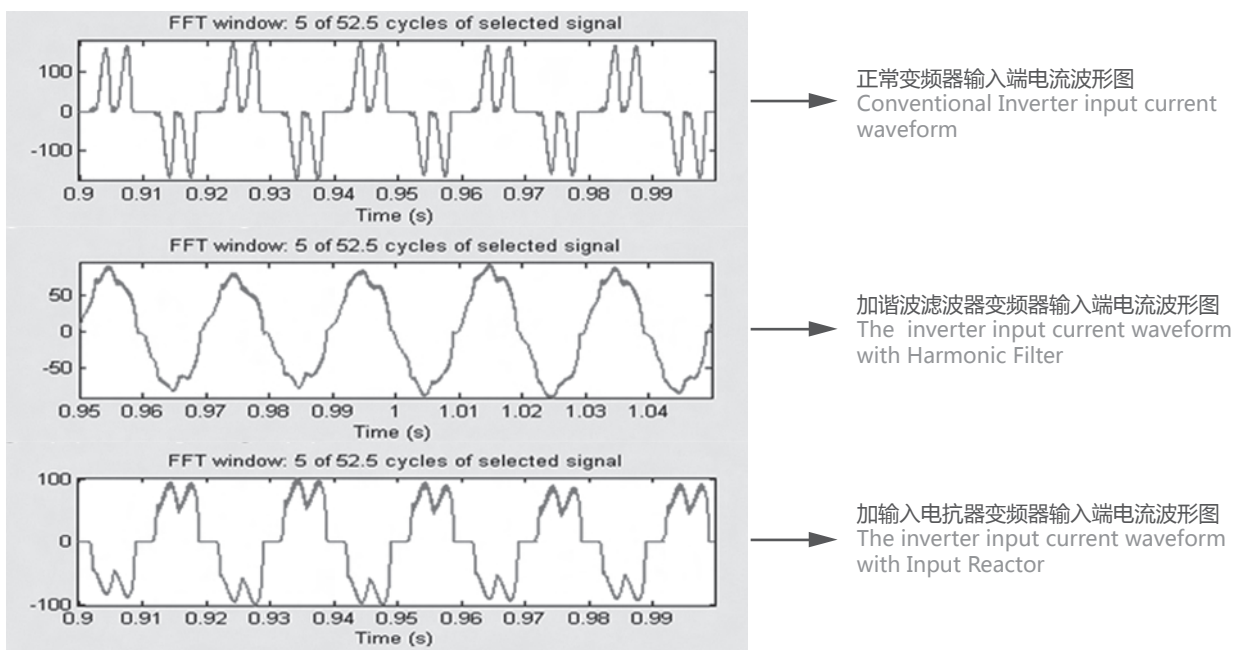
**交流输出电抗器**：可以根据客户使用频率的高低合理选取磁性材料（硅钢片，铁氧体，非晶铁心，磁粉芯）；采用了高性能的箔式绕组结构，具有直流电阻小，抗电磁力能力强，短时间过载能力强；采用高性能的F级以上的复合绝缘材料，使产品在严酷的工作条件下依然可以保持可靠的性能；电抗器设计磁通密度低，线性度好，过载能力强，配合真空压力浸渍工艺电抗器噪音小。

Different choices of magnetic materials (Silicon steel sheets, ferrite material or amorphous core) are available to match the frequencies of different application. Due to the excellent foil winding structure, Output AC Reactor is characterized by small DC resistance, strong resistance to electromagnetic interference and strong short-time overload capability. F Class insulation materials equip the products with reliable performance even in harsh operating conditions; Designed with low magnetic flux density, the reactor is of high linearity and powerful overload capacity. Moreover, combined with VPI process, the reactor noise is low.

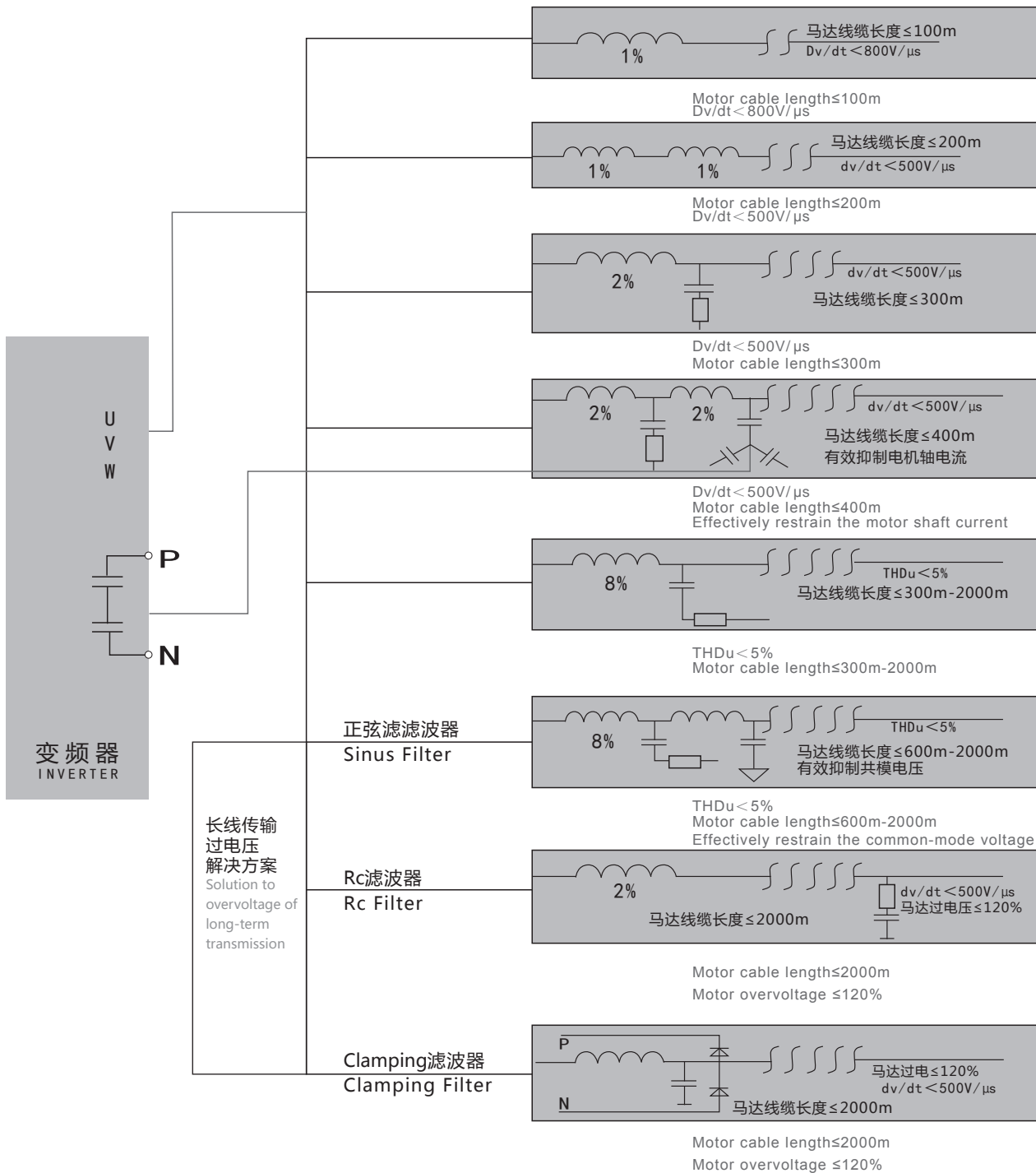
## 变频输入端解决方案 (Solutions to the inverter input side)



## 变频器输入端电流波形图 (Inverter input current waveform)



### 变频输出端解决方案 ( Solution to the inverter output side )



# 输入/输出交流电抗器 Input AC/Output AC Reactor

## 380V交流输入电抗器选型表 (380V Input AC Reactor Selection Table)

( 2%压降 2% Voltage Drop )

序号 No	功率 Power (KVA)	额定 电流 Rated current (A)	电感 值 Inductance value (mH)	压降 Voltage drop	绝缘 等级 Insulation class	电抗型号 Reactor type	图号 Picture No.	产品规格 Product specifications								
								D*H*W (mm)	D1*W1 (mm)	a*b (mm)	安装孔 直径 φ(mm)	A*e (mm)	材质 Material	重量 Weight (kg)	包装 数量 QTY	包装代码 Package code
1	1.5	5	2.8	2%	F	ACL-0005-EISC-E2M8C	A	110*130*84	91*65	6*11	/	/	Cu	2.4	2	A1
2	2.2	7	2	2%	F	ACL-0007-EISC-E2M0C		110*130*84	91*65	6*11	/	/	Cu	2.5	2	A1
3	3.7	10	1.4	2%	F	ACL-0010-EISC-E1M4C		110*130*84	91*65	6*11	/	/	Cu	2.6	2	A1
4	5.5	15	0.93	2%	F	ACL-0015-EISC-EM93C		125*135*84	40*64	6*9	/	/	Cu	3.3	2	B1
5	7.5	20	0.7	2%	F	ACL-0020-EISC-EM70C		130*135*84	40*64	6*9	/	/	Cu	3.3	2	B1
6	11	30	0.47	2%	F	ACL-0030-EISCL-EM47C	B	200*125*116	120*72	8.5*20	/	/	Cu	4.9	2	D4
7	15	40	0.35	2%	F	ACL-0040-EISCL-EM35C		200*125*116	120*72	8.5*20	/	/	Cu	4.9	2	D4
8	18.5	50	0.28	2%	F	ACL-0050-EISCL-EM28C		200*160*120	120*72	8.5*20	/	/	Cu	5.9	2	D4
9	22	60	0.24	2%	F	ACL-0060-EISCL-EM24C		200*150*120	120*72	8.5*20	/	/	Cu	5.9	2	D4
10	37	90	0.16	2%	F	ACL-0090-EISCL-EM16C		200*160*120	120*72	8.5*20	/	/	Cu	6.9	2	D4
11	45	120	0.12	2%	F	ACL-0120-EISCL-EM12C		200*140*155	120*72	8.5*20	/	/	Cu	10	2	D4
12	55	150	0.095	2%	F	ACL-0150-EISH-E95UC		195*210*160	120*92	8.5*20	11	25*5	AL	14	1	D8
13	75	200	0.07	2%	F	ACL-0200-EISH-E70UC		C	195*220*170	120*102	8.5*20	11	25*5	AL	16	1
14	110	250	0.056	2%	F	ACL-0250-EISH-E56UC	250*230*170		182*96	11*18	11	25*5	AL	18	1	E3
15	132	290	0.048	2%	F	ACL-0290-EISH-E48UC	250*230*180		182*96	11*18	12	30*5	AL	21	1	E3
16	160	330	0.042	2%	F	ACL-0330-EISH-E42UC	250*235*190		182*106	11*18	12	30*5	AL	22	1	E3
17	185	390	0.036	2%	F	ACL-0390-EISH-E36UC	290*250*185		214*100	11*18	12	30*5	AL	25	1	G3
18	220	490	0.028	2%	F	ACL-0490-EISH-E28UC	300*280*205		214*110	11*18	13	40*8	AL	33	1	G4
19	240	530	0.026	2%	F	ACL-0530-EISH-E26UC	300*280*205		214*110	11*18	13	40*8	AL	42	1	G4
20	280	600	0.023	2%	F	ACL-0600-EISH-E23UC	300*280*230		214*130	11*18	13	40*8	AL	42	1	G4
21	300	660	0.021	2%	F	ACL-0660-EISH-E21UC	300*280*230		214*130	11*18	13	40*8	AL	45	1	G4
22	380	800	0.017	2%	F	ACL-0800-EISH-E17UC	330*350*235		243*132	12*20	2-φ12	60*8	AL	55	1	I3
23	450	1000	0.014	2%	F	ACL-1000-EISH-E14UC	330*385*250		243*132	12*20	2-φ12	60*10	AL	56	1	I4
24	550	1250	0.011	2%	F	ACL-1250-EISH-E11UC	330*425*275		243*157	12*20	2-φ12	60*10	AL	76	1	I5

( 4%压降 4% Voltage Drop )

1	15	15	1.7	4%	F	ACL-0015-EISA-E1M7	A	155*150*120	95*82	6*15	/	/	AL	5.5	2	C2
2	22	25	1.05	4%	F	ACL-0025-EISA-E1M0	B	195*165*140	120*72	8.5*20	/	/	AL	7	2	D6
3	37	35	0.73	4%	F	ACL-0035-EISA-EM73		195*165*160	120*92	8.5*20	/	/	AL	9	2	D6
4	45	55	0.465	4%	F	ACL-0055-EISA-EM46		195*165*160	120*92	8.5*20	/	/	AL	10.5	2	D6
5	55	70	0.365	4%	F	ACL-0070-EISA-EM36	D	195*185*195	120*127	8.5*20	φ 9	20*4	AL	16.5	1	D8
6	75	90	0.285	4%	F	ACL-0090-EISA-EM28		250*230*185	182*88	11*18	φ 11	25*5	AL	21	1	E3
7	90	125	0.2	4%	F	ACL-0125-EISA-EM20		250*230*200	182*101	11*18	φ 11	25*5	AL	23.5	1	E3
8	110/132	160	0.16	4%	F	ACL-0160-EISA-EM16		250*230*210	182*111	11*18	φ 11	25*5	AL	27	1	E3
9	160	200	0.125	4%	F	ACL-0200-EISA-EM12		290*250*205	214*100	11*18	φ 11	30*5	AL	30	1	G3
10	220	250	0.105	4%	F	ACL-0250-EISA-EM10		290*250*220	214*125	11*18	φ 11	30*5	AL	35	1	G3
11	250	300	0.085	4%	F	ACL-0300-EISA-E85U		320*280*220	243*119	12*20	φ 14	40*6	AL	41	1	H3
12	315/355	400	0.065	4%	F	ACL-0400-EISA-E65U	E	320*280*235	243*134	12*20	φ 14	40*6	AL	47	1	H3
13	450	500	0.05	4%	F	ACL-0500-EISA-E50U		320*280*245	243*144	12*20	φ 14	40*8	AL	53	1	H3
14	500/560	650	0.04	4%	F	ACL-0650-EISA-E40U		395*310*295	225*175	15*25	φ 14	40*8	AL	60	1	J2
15	630/750	800	0.032	4%	F	ACL-0800-EISA-E32U	F	395*355*295	225*175	15*25	φ 14	40*10	AL	80	1	J3
16	800	950	0.027	4%	F	ACL-0950-EISA-E27U		395*395*320	225*175	15*25	φ 14	60*10	AL	89	1	J4
17	900/1000	1200	0.021	4%	F	ACL-1200-EISA-E21U		395*395*340	225*200	15*25	φ 14	60*10	AL	100	1	J4

包装代码表, 请参考P58 (Please refer to P58 - package code table.)

# 输入/输出交流电抗器

## Input AC/Output AC Reactor

### 380V交流输出电抗器选型表 (380V Output AC Reactor Selection Table)

(1%压降 1% Voltage Drop)

序号 No.	功率 Power (KVA)	额定 电流 Rated current (A)	电感 Inductance value (mH)	压降 Voltage drop	绝缘 等级 Insulation class	电抗型号 Reactor type	图号 Picture No.	产品规格 Product specifications								
								D*H*W (mm)	D1*W1 (mm)	a*b (mm)	安装孔 直径 φ(mm)	A*e (mm)	材质 Material	重量 Weight (kg)	包装 数量 QTY	包装代码 Package code
1	1.5	5	1.4	1%	F	OCL-0005-EISC-E1M4C	A	110*130*84	91*65	6*11	/	/	Cu	2.4	2	A1
2	2.2	7	1	1%	F	OCL-0007-EISC-E1M0C		110*130*84	91*65	6*11	/	/	Cu	2.4	2	A1
3	3.7	10	0.7	1%	F	OCL-0010-EISC-EM70C		110*130*84	91*65	6*11	/	/	Cu	2.4	2	A1
4	5.5	15	0.47	1%	F	OCL-0015-EISC-EM47C		155*140*84	95*61	6*15	/	/	Cu	3	2	C2
5	7.5	20	0.35	1%	F	OCL-0020-EISC-EM35C		155*140*84	95*61	6*15	/	/	Cu	3.8	2	C2
6	11	30	0.23	1%	F	OCL-0030-EISCL-EM23C		200*130*116	120*72	8.5*20	/	/	Cu	4.6	2	D5
7	15	40	0.18	1%	F	OCL-0040-EISCL-EM18C	200*130*116	120*72	8.5*20	/	/	Cu	4.8	2	D5	
8	18.5	50	0.14	1%	F	OCL-0050-EISCL-EM14C	200*130*116	120*72	8.5*20	/	/	Cu	5	2	D5	
9	22	60	0.12	1%	F	OCL-0060-EISCL-EM12C	200*130*116	120*72	8.5*20	/	/	Cu	5.1	2	D5	
10	30	80	0.087	1%	F	OCL-0080-EISC-E87UC	B	195*165*130	120*72	8.5*20	/	/	Cu	6	2	D7
11	37	90	0.078	1%	F	OCL-0090-EISC-E78UC		195*165*130	120*72	8.5*20	/	/	Cu	6	2	D7
12	45	120	0.058	1%	F	OCL-0120-EISC-E58UC		195*165*165	150*88	8*15	/	/	Cu	9	2	D7
13	55	150	0.047	1%	F	OCL-0150-EISH-E47UC		195*210*155	120*92	8.5*20	11	20*5	AL	10	1	D7
14	75	200	0.035	1%	F	OCL-0200-EISH-E35UC		195*210*165	120*102	8.5*20	11	20*5	AL	12	1	D7
15	110	250	0.028	1%	F	OCL-0250-EISH-E28UC		195*210*165	120*102	8.5*20	11	20*5	AL	12	1	D7
16	132	290	0.024	1%	F	OCL-0290-EISH-E24UC	C	255*240*175	182*91	11*18	12	30*5	AL	20	1	F2
17	160	330	0.021	1%	F	OCL-0330-EISH-E21UC		255*240*175	182*91	11*18	12	30*5	AL	20	1	F2
18	185	390	0.018	1%	F	OCL-0390-EISH-E18UC		255*245*175	182*91	11*18	12	30*5	AL	20	1	F2
19	220	490	0.014	1%	F	OCL-0490-EISH-E14UC		300*295*190	214*95	11*18	14	40*8	AL	28	1	G1
20	250	530	0.013	1%	F	OCL-0530-EISH-E13UC		300*295*190	214*95	11*18	14	40*8	AL	29	1	G1
21	280	600	0.012	1%	F	OCL-0600-EISH-E12UC		300*295*210	214*110	11*18	14	40*8	AL	33	1	G2
22	300	660	0.011	1%	F	OCL-0660-EISH-E11UC	300*315*210	214*110	11*18	14	40*8	AL	38	1	G2	
23	380	800	0.0087	1%	F	OCL-0800-EISH-E8U7C	F	325*350*215	243*112	12*20	2-φ13	60*8	AL	40	1	I1
24	450	1000	0.007	1%	F	OCL-1000-EISH-E7U0C		325*350*215	243*112	12*20	2-φ13	60*8	AL	40	1	I1
25	550	1200	0.0058	1%	F	OCL-1200-EISH-E5U8C		325*395*235	243*132	12*20	2-φ13	60*8	AL	56	1	I2

(2%压降 2% Voltage Drop)

1	15	15	0.85	2%	F	OCL-0015-EISA-EM85	A	195*165*140	120*72	8.5*20	/	/	AL	6.5	2	D5
2	22	25	0.51	2%	F	OCL-0025-EISA-EM51		195*165*140	120*72	8.5*20	/	/	AL	7	2	D5
3	37	35	0.36	2%	F	OCL-0035-EISA-EM36		195*150*155	120*85	8.5*20	/	/	AL	9.5	2	D6
4	45	55	0.23	2%	F	OCL-0055-EISA-EM23		195*185*175	120*107	8.5*20	/	/	AL	14	2	D7
5	55	70	0.182	2%	F	OCL-0070-EISA-EM18	D	250*200*175	182*79	11*18	11	25*5	AL	15	1	E2
6	75	90	0.14	2%	F	OCL-0090-EISA-EM14		250*230*180	182*89	11*18	11	25*5	AL	18	1	E3
7	90	125	0.1	2%	F	OCL-0125-EISA-EM10		250*230*200	182*106	11*18	11	25*5	AL	23	1	E3
8	110/132	160	0.08	2%	F	OCL-0160-EISA-E80U		290*250*190	214*100	11*18	11	25*5	AL	25	1	G3
9	160	200	0.064	2%	F	OCL-0200-EISA-E64U		290*250*195	214*105	11*18	11	30*5	AL	28	1	G3
10	220	250	0.05	2%	F	OCL-0250-EISA-E50U		290*250*215	214*125	11*18	11	30*5	AL	35	1	G3
11	250	300	0.042	2%	F	OCL-0300-EISA-E42U	E	320*280*215	243*129	12*20	14	40*6	AL	37	1	H3
12	315/355	400	0.032	2%	F	OCL-0400-EISA-E32U		320*280*235	243*144	12*20	14	40*6	AL	45	1	H3
13	450	500	0.025	2%	F	OCL-0500-EISA-E25U		320*280*250	243*149	12*20	14	40*8	AL	46	1	H3
14	500/560	650	0.02	2%	F	OCL-0650-EISA-E20U	F	395*355*270	225*150	15*25	14	50*10	AL	60	1	J3
15	630/750	800	0.016	2%	F	OCL-0800-EISA-E16U		395*355*295	225*175	15*25	14	50*10	AL	70	1	J3
16	800	950	0.013	2%	F	OCL-0950-EISA-E13U		395*360*315	225*175	15*25	14	60*10	AL	75	1	J3
17	900/1000	1200	0.01	2%	F	OCL-1200-EISA-E10U	395*360*340	225*200	15*25	14	60*10	AL	85	1	J3	

包装代码表, 请参考P58 (Please refer to P58 - package code table.)

# 输入/输出交流电抗器 Input AC/Output AC Reactor

## 690V交流输入电抗器选型表 (380V Input AC Reactor Selection Table)

序号 №	功率 Power (KVA)	额定 电流 Rated current (A)	电感 值 Inductance value (mH)	压降 Voltage drop	绝缘 等级 Insulation class	电抗型号 Reactor type	图号 Picture No.	产品规格 Product specifications								
								D*H*W (mm)	D1*W1 (mm)	a*b (mm)	安装孔 直径 Φ(mm)	A*e (mm)	材质 Material	重量 Weight (kg)	包装 数量 QTY	包装代码 Package code
1	15	15	1.7	2%	F	ACL-0015-EISA-E1M7	A	155*150*120	95*82	6*15	/	/	AL	5.5	2	D7
2	22	25	1.05	2%	F	ACL-0025-EISA-E1M0	B	195*165*140	120*72	8.5*20	/	/	AL	7	2	D7
3	37	35	0.73	2%	F	ACL-0035-EISA-EM73		195*165*160	120*92	8.5*20	/	/	AL	9	2	D7
4	45	55	0.465	2%	F	ACL-0055-EISA-EM46	D	195*165*160	120*92	8.5*20	/	/	AL	10.5	2	D7
5	55	70	0.365	2%	F	ACL-0070-EISA-EM36		195*185*195	120*127	8.5*20	Φ 9	20*4	AL	16.5	1	D8
6	75	90	0.285	2%	F	ACL-0090-EISA-EM28		250*230*185	182*88	11*18	Φ 11	25*5	AL	21	1	E3
7	90	125	0.2	2%	F	ACL-0125-EISA-EM20		250*230*200	182*101	11*18	Φ 11	25*5	AL	23.5	1	E3
8	110/132	160	0.16	2%	F	ACL-0160-EISA-EM16		250*230*210	182*111	11*18	Φ 11	25*5	AL	27	1	E3
9	160	200	0.125	2%	F	ACL-0200-EISA-EM12		290*250*205	214*100	11*18	Φ 11	30*5	AL	30	1	G3
10	220	250	0.105	2%	F	ACL-0250-EISA-EM10		290*250*220	214*125	11*18	Φ 11	30*5	AL	35	1	G3
11	250	300	0.085	2%	F	ACL-0300-EISA-E85U		320*280*220	243*119	12*20	Φ 14	40*6	AL	41	1	H3
12	315/355	400	0.065	2%	F	ACL-0400-EISA-E65U		320*280*235	243*134	12*20	Φ 14	40*6	AL	47	1	H3
13	450	500	0.05	2%	F	ACL-0500-EISA-E50U		320*280*245	243*144	12*20	Φ 14	40*8	AL	53	1	H3
14	500/560	650	0.04	2%	F	ACL-0650-EISA-E40U	E	395*310*295	225*175	15*25	Φ 14	40*8	AL	60	1	J2
15	630/750	800	0.032	2%	F	ACL-0800-EISA-E32U		395*355*295	225*175	15*25	Φ 14	40*10	AL	80	1	J3
16	800	950	0.027	2%	F	ACL-0950-EISA-E27U	F	395*395*295	225*175	15*25	Φ 14	60*10	AL	89	1	J4
17	900/1000	1200	0.021	2%	F	ACL-1200-EISA-E21U		395*395*340	225*200	15*25	Φ 14	60*10	AL	100	1	J4

包装代码表, 请参考P58 (Please refer to P58 - package code table.)

## 690V交流输出电抗器选型表 (690V Output AC Reactor Selection Table)

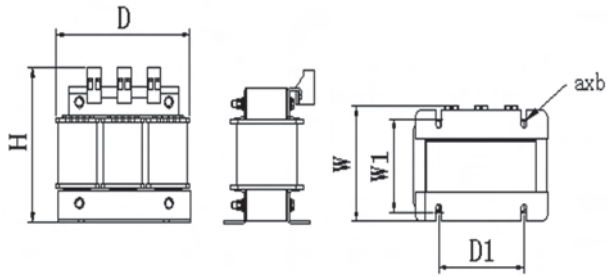
序号 №	功率 Power (KVA)	额定 电流 Rated current (A)	电感 值 Inductance value (mH)	压降 Voltage drop	绝缘 等级 Insulation Class	电抗型号 Reactor type	图号 Picture No.	产品规格 Product specifications								
								D*H*W (mm)	D1*W1 (mm)	a*b (mm)	安装孔 直径 Φ(mm)	A*e (mm)	材质 Material	重量 Weight (kg)	包装 数量 QTY	包装代码 Package code
1	15	15	0.85	1%	F	OCL-0015-EISA-EM85	A	195*165*140	120*72	8.5*20	/	/	AL	6.5	2	D5
2	22	25	0.51	1%	F	OCL-0025-EISA-EM51		195*165*140	120*72	8.5*20	/	/	AL	7	2	D5
3	37	35	0.36	1%	F	OCL-0035-EISA-EM36		195*150*155	120*85	8.5*20	/	/	AL	9.5	2	D7
4	45	55	0.23	1%	F	OCL-0055-EISA-EM23		195*185*175	120*107	8.5*20	/	/	AL	14	2	D8
5	55	70	0.182	1%	F	OCL-0070-EISA-EM18	D	250*200*175	182*79	11*18	11	25*5	AL	15	1	E2
6	75	90	0.14	1%	F	OCL-0090-EISA-EM14		250*230*180	182*89	11*18	11	25*5	AL	18	1	E3
7	90	125	0.1	1%	F	OCL-0125-EISA-EM10		250*230*200	182*106	11*18	11	25*5	AL	23	1	E3
8	110/132	160	0.08	1%	F	OCL-0160-EISA-E80U		290*250*190	214*100	11*18	11	25*5	AL	25	1	G3
9	160	200	0.064	1%	F	OCL-0200-EISA-E64U		290*250*195	214*105	11*18	11	30*5	AL	28	1	G3
10	220	250	0.05	1%	F	OCL-0250-EISA-E50U		290*250*215	214*125	11*18	11	30*5	AL	35	1	G3
11	250	300	0.042	1%	F	OCL-0300-EISA-E42U		320*280*215	243*129	12*20	14	40*6	AL	37	1	H3
12	315/355	400	0.032	1%	F	OCL-0400-EISA-E32U		320*280*235	243*144	12*20	14	40*6	AL	45	1	H3
13	450	500	0.025	1%	F	OCL-0500-EISA-E25U		320*280*250	243*149	12*20	14	40*8	AL	46	1	H3
14	500/560	650	0.02	1%	F	OCL-0650-EISA-E20U		E	395*355*270	225*150	15*25	14	50*10	AL	60	1
15	630/750	800	0.016	1%	F	OCL-0800-EISA-E16U	395*355*295		225*175	15*25	14	50*10	AL	70	1	J3
16	800	950	0.013	1%	F	OCL-0950-EISA-E13U	F	395*360*315	225*175	15*25	14	60*10	AL	75	1	J3
17	900/1000	1200	0.01	1%	F	OCL-1200-EISA-E10U		395*360*340	225*200	15*25	14	60*10	AL	85	1	J3

包装代码表, 请参考P58 (Please refer to P58 - package code table.)

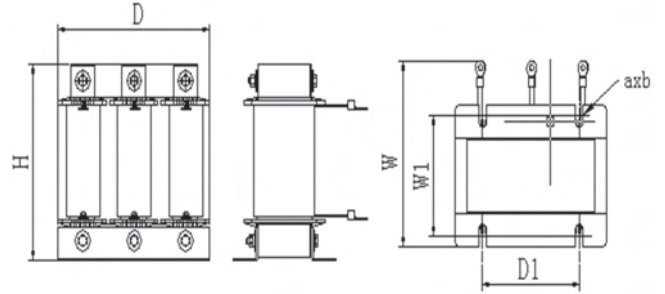
# 输入/输出交流电抗器

## Input AC/Output AC Reactor

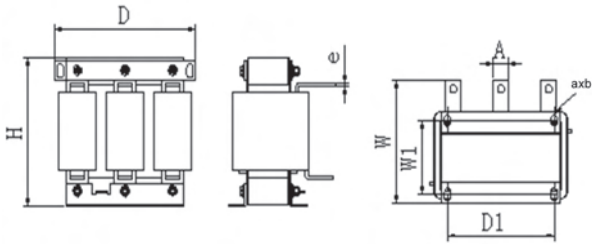
### 产品尺寸图 (Product Size)



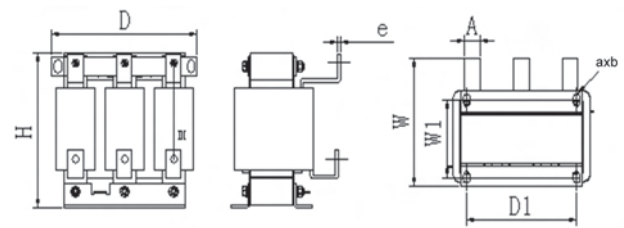
Picutre A



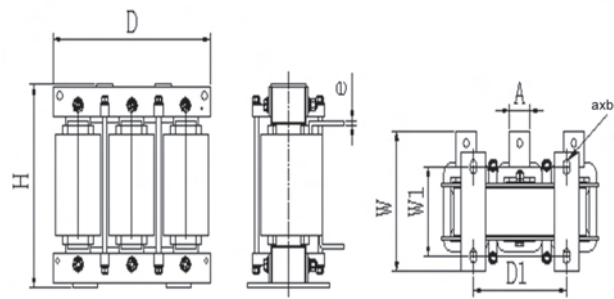
Picutre B



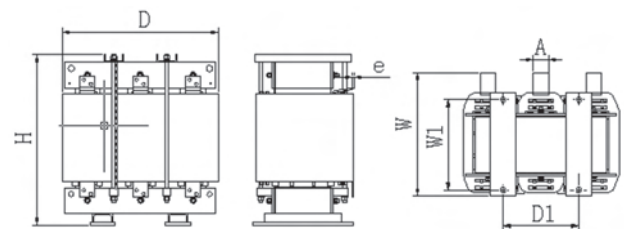
Picutre C



Picutre D



Picutre E



Picutre F

## ■ 包装代码对应一览表 (Package Code Table)

序号 No.	代号 Code	D	W	H	D <sub>max</sub>	D <sub>min</sub>	D <sub>max</sub> -D <sub>min</sub>	W <sub>max</sub>	W <sub>min</sub>	W <sub>max</sub> -W <sub>min</sub>	H <sub>max</sub>	H <sub>min</sub>	H <sub>max</sub> -H <sub>min</sub>	包装图 Package Outline
1	A1	220	330	300	110	80	30	200	168	32	168	168	20	
2	A2	220	360	300	110	110	0	240	240	0	240	240	0	
3	B1	220	330	300	130	125	5	168	168	0	168	168	0	
4	B2	220	430	335	138	120	18	300	270	30	270	270	25	
5	C2	220	360	315	155	155	0	240	168	72	168	168	10	
6	C3	255	430	380	165	155	10	320	130	190	130	130	20	
7	D3	300	290	420	210	185	25	200	150	50	150	150	40	
8	D4	290	420	325	200	200	0	310	232	78	232	232	35	
9	D5	310	390	445	220	195	25	280	150	130	150	150	150	
10	D6	285	430	330	195	195	0	320	280	40	280	280	15	
11	D7	285	460	375	195	155	40	350	155	195	155	155	60	
12	D8	285	510	420	195	195	0	400	195	205	195	195	95	
13	E2	340	265	365	250	250	0	175	175	0	175	175	0	
14	E3	340	325	395	250	250	0	235	180	55	180	180	60	
15	E4	325	310	435	235	215	20	220	160	60	160	160	20	
16	F2	345	310	410	255	250	5	220	175	45	175	175	25	
17	F3	340	340	465	250	250	0	250	240	10	240	240	50	
18	G1	390	280	460	300	300	0	190	190	0	190	190	0	
19	G2	390	300	480	300	300	0	210	210	0	210	210	20	
20	G3	390	370	430	300	290	10	280	190	90	190	190	80	
21	G4	390	370	395	300	300	0	280	280	0	280	280	25	
22	G5	380	340	455	290	250	40	250	200	50	200	200	20	
23	G6	340	310	445	250	250	0	220	220	0	220	220	0	
24	H3	410	445	485	320	320	0	355	215	140	215	215	40	
25	H4	410	430	530	320	315	5	340	245	95	245	245	75	
26	H5	410	430	585	320	320	0	340	340	0	340	340	0	
27	I1	415	305	515	325	325	0	215	215	0	215	215	0	
28	I2	450	545	560	360	325	35	455	235	220	235	235	135	
29	I3	450	440	515	360	320	40	350	270	80	270	270	115	
30	I4	450	475	565	360	330	30	385	340	45	340	340	150	
31	I5	420	515	615	330	320	10	425	340	85	340	340	175	
32	J2	485	385	475	395	395	0	295	295	0	295	295	0	
33	J3	485	480	525	395	370	25	390	270	120	270	270	20	
34	J4	485	465	560	395	365	30	375	320	55	320	320	20	
35	K1	510	440	465	420	420	0	350	350	0	350	350	0	
36	K2	515	560	520	425	400	25	470	365	105	365	365	15	
37	K3	510	430	555	420	420	0	340	340	0	340	340	0	
38	K4	490	430	605	400	400	0	340	340	0	340	340	40	
39	K5	520	560	645	430	405	25	470	350	120	350	350	10	
40	L1	570	440	553	480	480	0	350	350	0	350	350	0	
41	L2	570	430	643	480	480	0	340	340	0	340	340	0	
42	L3	610	460	638	520	520	0	370	370	0	370	370	0	
43	L4	575	525	703	485	485	0	435	435	0	435	435	0	
44	L5	545	570	673	455	455	0	480	480	0	480	480	0	
45	L6	590	600	738	500	340	160	510	340	170	340	340	115	
46	M2	640	470	703	550	550	0	380	340	40	340	340	0	
47	M3	635	555	713	545	545	0	465	465	0	465	465	0	
48	N2	680	605	773	590	550	40	515	420	95	420	420	45	
49	N3	640	620	823	550	550	0	530	530	0	530	530	25	
50	N4	690	620	883	600	600	0	530	530	0	530	530	0	